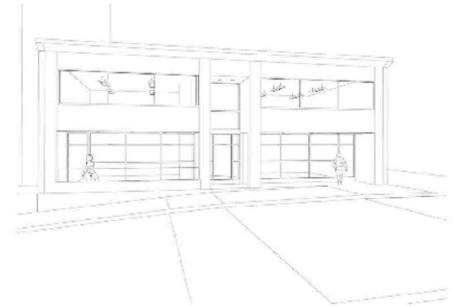


FOR LEASE

2,250-5,000 SQ. FT.—SECOND FLOOR OFFICE
7810 FORSYTH BLVD.
CLAYTON, MO 63105



MATERIAL LIST

EIFS FACADE (COMPARE TO EXISTING PHOTO FOR NEW AREAS)
ALUMINUM STOREFRONT. SET BACK FROM FACADE 6".
QTY 8, 6" RECESSED EXTERIOR CAN LIGHTS
QTY 1, EXTERIOR WALL SCOURCE
GLASS PANEL HANDRAIL (EAST STOREFRONT)

OWH

Ottolino Winters Huebner
Principals Architects - OWH Architects

7810 FACADE RENOVATION STUDY: OPTION 2

- **Building naming rights available**
- **Surface parking behind building**
- **Balcony/Sitting area in rear**
- **Lower level storage**
- **Upgraded facade**

FOR INFORMATION:

John Compton
(314) 725-1997

jcompton@boudoures.com

www.boudoures.com

Wm. BOUDOURES Co.
COMMERCIAL • RETAIL REAL ESTATE SERVICES

Information contained herein has been obtained from the owner of the property or from other sources that we deem reliable. We have no doubt to its accuracy but we do not guarantee it.

